

GRAPHIC MEDICINE WORKSHOPS FREQUENTLY ASKED QUESTIONS – 1 September 2018

What is Graphic Medicine?

Graphic Medicine refers to the use of graphic novels, comics, and visual storytelling in medical education, patient care, and other applications related to healthcare and the life sciences.

Graphic medicine is a democratising and egalitarian approach in which citizens are invited to draw comics that help them:

- i. reflect on the social and cultural perception of their illness;
- ii. relate the subjective patient/carer/provider experience;
- iii. develop empathy by recounting the experiences of others;
- iv. enable discussion of difficult subjects;
- v. help other sufferers or carers.

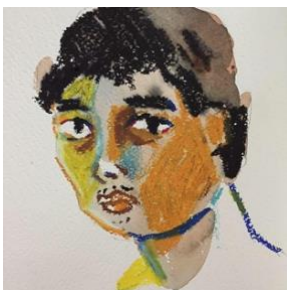
Examples of graphic medicine can be seen at <https://www.graphicmedicine.org>

Who are the Graphic Medicine Workshop leaders?

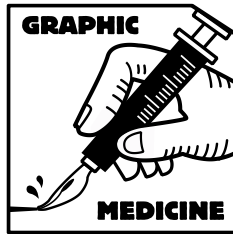
Our workshop leaders are two of Singapore's finest comic artists and a medical humanities expert:



Asst. Professor Graham Matthews is the Medical Humanities Research Cluster Co-ordinator and the Assistant Chair (Communities and Outreach), School of Humanities at Nanyang Technological University. Apart from medical humanities, his research interests include postmodern and chinese literature.



James Tan likes to sit in a kopitiam and draw what he observes. An illustrator and comic artist, he worked previously as a creative director in an animation studio. He has a travelogue art book, *The World is So Big: An Artist's Sketchbook*, and a graphic novel, *Final Resting Place*. His work has been featured in *Urban Sketchers Singapore Vol. 1* and *Vol. 2*, and the *Liquid City* anthology published by Image Comics. He's currently working on "All That Remains" - an anthology of stories on dementia.



Don Low is an artist who delivers in different art forms that includes comics, illustration, and painting in both traditional and digital mediums. He is the author of graphic novel, *Kungfu Dough*. He published his first graphic novel in 1996, collaborated with Jack Neo for his comic series *Return to Camp I, II, & III*, and was featured in *Liquid City 2*. He is currently a freelance illustrator, and teaches drawing part-time. As an active urban sketcher, his other works are also featured in *The Art of Urban Sketching*.

Why are Graphic Medicine Workshops being provided?

"Illness is the night-side of life, a more onerous citizenship. Everyone who is born holds dual citizenship, in the kingdom of the well and in the kingdom of the sick. Although we all prefer to use only the good passport, sooner or later each of us is obliged, at least for a spell, to identify ourselves as citizens of that other place."

Susan Sontag, *Illness as Metaphor*

We wish to empower people in Singapore to:

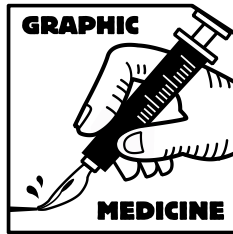
- Design and write their own stories on health and sickness using graphic novel techniques
- Have a conversation in a confidential, safe environment about health and sickness, illness and well-being.
- Learn how to draw from professional Singaporean graphic artists, James Tan and Don Low
- Learn how graphic novels work to communicate feelings and ideas about health and sickness
- Learn from a medical humanities expert, Associate Professor Graham Matthews from NTU

Where will the Graphic Medicine Workshops be held?

The first Graphic Medicine Workshop will be held on 22 September, 27 October and 17 November at **Sing Lit Station, #02-01 22 Dickson Road, Singapore 209506**, and at later dates at other locations nearby and in the west of Singapore.

Participants' privacy will be respected. Any conversations, discussions and/or sharing in the workshops will remain strictly private and confidential, unless expressly waived by the relevant participant. Participants are requested to respect the privacy of other participants and not discuss or divulge any conversations or discussions to anyone outside the workshop. We note the organisers cannot guarantee that participants will adhere to these standards after leaving the workshop.

How much does it cost to attend a Graphic Medicine Workshop?



The workshops are provided free to members of the public over 18 years old. Numbers are limited as each Workshop will be provided to a maximum of 25 people.

To register for workshops please click on the links below or email us at klarissa@singlitstation.com and jongresham@singlitstation.com.

- [Register for 22 September Workshop Here](#)
- [Register for 27 October Workshop Here](#)
- [Register for 17 November Workshop Here](#)

If you have any queries, please contact us.

When will the Graphic Medicine Workshops be held?

The workshops will be held from 2pm to 4pm on Saturday:

25 August 2018
22 September 2018
27 October 2018
17 November 2018

Who are the Graphic Medicine Workshops for?

Graphic Medicine workshops are for anyone interested in learning how to draw and wishing to explore their ideas on health and wellbeing through graphic novels. We will tailor the workshop to your level of expertise and experience with drawing, comics and visual design.

The workshops are free for all members of the public over 18 years old. No prior drawing expertise or experience is required.

Who is providing the Graphic Medicine Workshops?

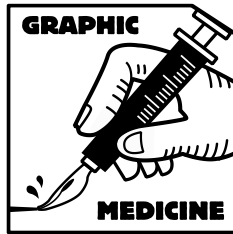
The Graphic Medicine workshops are provided by Sing Lit Station and Nanyang Technological University, School of Humanities. The Graphic Medicine Workshops are a project funded by the NTU Singapore Community Engagement Initiative.

About Sing Lit Station

Sing Lit Station is a platform where readers and writers meet. Sing Lit Station is a literary non-profit organisation, a registered charity and Institution of Public Character. Its key programmes and initiatives include Book A Writer placing Singapore based writers in Singapore schools, Writing the City creative writing workshops, Singapore Poetry Writing Month, the publishing imprint Ten Year Series, and the Singaporean poetry resource poetry.sg.

For more information, visit www.singlitstation.com/about

About Nanyang Technological University, Singapore



A research-intensive public university, Nanyang Technological University, Singapore (NTU Singapore) has 33,000 undergraduate and postgraduate students in the colleges of Engineering, Business, Science, Humanities, Arts, & Social Sciences, and its Interdisciplinary Graduate School. It also has a medical school, the Lee Kong Chian School of Medicine, set up jointly with Imperial College London.

NTU is also home to world-class autonomous institutes – the National Institute of Education, S Rajaratnam School of International Studies, Earth Observatory of Singapore, and Singapore Centre for Environmental Life Sciences Engineering – and various leading research centres such as the Nanyang Environment & Water Research Institute (NEWRI) and Energy Research Institute @ NTU (ERI@N).

Ranked 12th in the world, NTU has been placed the world's top young university for the past five years. The University's main campus is frequently listed among the Top 15 most beautiful university campuses in the world and it has 57 Green Mark-certified (equivalent to LEED-certified) building projects comprising more than 230 buildings, of which 95% are certified Green Mark Platinum. Apart from its main campus, NTU also has a campus in Singapore's healthcare district.

For more information, visit www.ntu.edu.sg

How do I register to attend a Graphic Medicine Workshop?

To register for workshops please email us at klarissa@singlitstation.com and jongresham@singlitstation.com.

If you have any queries, please contact us.

What is the format of the Graphic Medicine Workshops?

1. Each workshop will begin with a short and accessible talk on a key issue in the Medical Humanities, with emphasis on pathographies (illness narratives) and graphic medicine.
2. Reading and discussion activities based on published graphic narratives; participants will be shown how to close read and analyse graphic novels.
3. Studio time with technical lessons on drawing (i.e. perspective drawing, scale, text, shading). Participants will be invited to write/draw their own graphic narrative.
4. Sharing and feedback exercise.
5. Summary of key themes and discussion points.

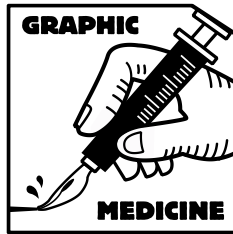
Is there anything I should bring along to a Graphic Medicine Workshop?

We will provide drawing materials. All you have to bring along is yourself. We will have workshop assistants to provide any help where required.

Further information & Graphic Medicine Workshop Contacts:

If you have any queries, please contact us below.

Olivia Djawoto
Research Assistant
Nanyang Technological University
odjawoto@ntu.edu.sg



Klarissa Scmitt

Sing Lit Station
#02-01 22 Dickson Rd
Singapore 209506
M: +65 9115 0299
klarissa@singlitstation.com
www.singlitstation.com

Jon Gresham

Sing Lit Station
#02-01 22 Dickson Rd
Singapore 209506
M: +65 9180 2851
jongresham@singlitstation.com
www.singlitstation.com